

The Angmering School

Ambition
Respect
Courage

Travel Plan

September 2021

Introduction

The Angmering School provides co-educational, comprehensive education for about 1300 students aged from 11 to 19 years of age. It includes a special support facility, the Lavinia Norfolk Centre, for around 140 students with a variety of physical and sensory impairments. We currently have a teaching staff of 105 and around 110 support staff including part time coaches.

The school is located to the south of Angmering village and is bounded to the south by the A259 trunk road, which is the main arterial route between Worthing, Littlehampton and Bognor Regis. This road attracts high volumes of road traffic throughout the day, especially between the hours of 0800 and 1000, and again between the hours of 1500 and 1800 daily.

The western boundary is defined by the B2140 (Station Road), the main access route to Angmering village.

To the east, the site is bounded by housing, recreational, agricultural and light-industrial premises and to the north by residential housing and the Bramley Green estate.

The school serves a large catchment area including the villages of Findon, Ferring, East Preston, Rustington, Clapham and Patching and Angmering. There are a significant number of students who travel from farther away often because they attend the LNC. All 7 villages are predominantly residential, with little indigenous industry or commerce, certainly very few large enterprises. As a result, in the mornings there is a flow of people travelling to work in the larger towns to the east, west and north; returning in late afternoon.

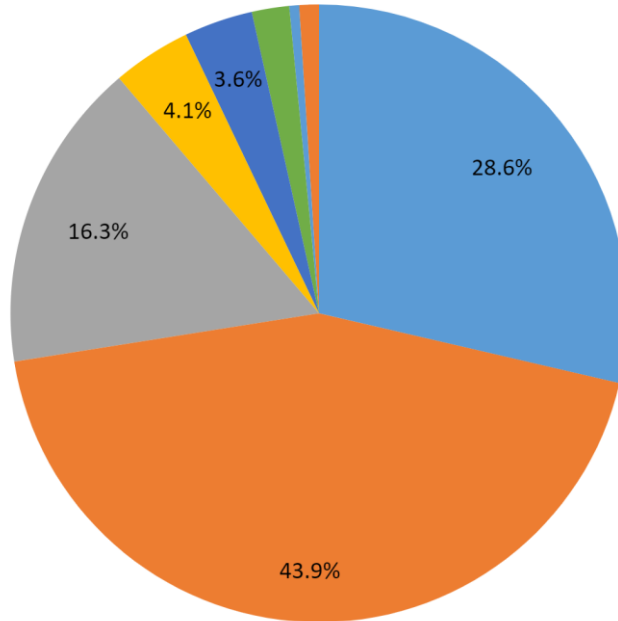
The teaching and ancillary staff employed at the school are drawn from an even larger area with significant numbers travelling from Brighton and Chichester. The school is the largest single employer in the Angmering area.

There are 145 dedicated car parking places on site, excluding disabled spaces of which we have 6. In addition we have parking for 4 minibuses, 10 motor cycles and a dedicated Bus parking lane.

Current Travel to School - Survey Results

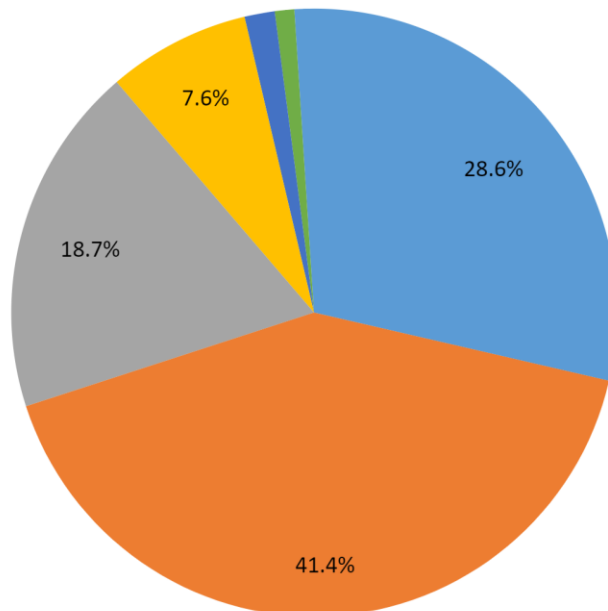
Form of Travel

● Car ● Walking ● Push Bike ● Train ● School Bus ● Public Bus ● Taxi ● Other



Time Taken to Travel

● 0-10 ● 11-20 ● 21-30 ● 31-40 ● 41-50 ● 51-60 ● 60+



Cycle Storage

Following concerns raised by parents and students about the lack of cycle storage, the school installed a large cycle compound to the front of the site - housing approximately 120 bikes in a fenced enclosure, covered by CCTV.

Staff Travel

We have 129 full time and 86 part time staff, most of which live over 5km from the school so have to drive to school as public transport does not fit with the school times, we promote the good practice of car sharing to all staff through the staff notice board and encourage staff and students to cycling. We promote the links to the WSCC staff discounts for rail and bus travel. We have increased parking spaces on site, over recent years, though at times it can still be tight. Weather has a big impact.

Futures Plans at the school

The school has undergoing a planned expansion in order to accommodate an increase in pupil numbers at local primary schools. This expansion was completed in August 2019. Staff numbers have not be affected due to staffing reductions in areas other than teaching. Additional car parking spaces were established as part of the expansion.

Travelling to School - Identified areas of concern

| Location | Identified Concern | Identified By | Action |
|------------------------------|--------------------------------------|---------------|--------------------|
| Dueling of the A259 | Traffic congestion on A259 | WSCC Highways | See 'Future Plans' |
| Road Access. Front of School | Poor parking. Reduced access/ egress | Travel Plan | See Appendix 1 |

Initiatives and Promotions of Sustainable Transport.

Healthy Schools, Eco schools, Engage, Walk to School weeks.
The travel plan is promoted to parents and the wider school community through newsletter, notice boards and on the school web site.

Availability of Travel to and from School

Rail

Angmering Station, which lies on the line between Portsmouth and Brighton/London Victoria is ½-mile south of the school. At peak times, 3 trains per hour run in both directions although not all trains stop at the smaller stations served by the line.

Buses

Stagecoach operates the east/west 700 service regularly every half hour. The nearest bus stop is south of Angmering station.

Compass operate a single service in each direction (Route 8) which is a public route, between Ferring and the school for our students, at the start and end of the school day.

WSCC have arranged for Crawley Luxury to provide a dedicated “school” bus service for students from Findon, Clapham and Patching. There is no provision for travel to either location after evening activities, such as clubs and sports fixtures.

Only the 700 service allows for students to take part in after school activities and get the bus home.

By Car and Taxi

The site is well served by roads, affording access from all directions, albeit channelled through the single vehicular access.

Of special note is the use of taxis and other specialist vehicles to transport students to and from the LNC. These vehicles give access to the specialist facilities available at the school and could not be replaced.

Community using the school site for sport has been focussed, with multiple sports using the synthetic turf pitch, basketball, gymnastics, dance and archery. These activities bring additional traffic movements and parking needs.

On Foot or Cycle

Pavements are provided on either side of Station Road to the south of the junction with the A259 but are narrow and abut the carriageways. A ramped foot and cycle bridge is located just east of the junction of the A259 with Station Road to facilitate the safe crossing of the road.

There is a dedicated cycle path on the south side of the A259 to the west of the junction with Station Road going to/from Rustington, but no crossing lights for Station Road which has to be crossed to reach the footbridge above.

The “Toucan” crossing the A259 midway between the junctions with Station Road and Roundstone Lane provides a safe crossing from East Preston into the network of paths and cycle ways to the north of the A259.

The Toucan crossing over the A259 at Sainsbury’s gives access to the public footpath through Ham Manor, to the village and also connects to the new combined foot and cycle path on the north side of the A259, which runs alongside the A259 to Station Road. At the end this combined pathway, there is a new Toucan Crossing which gives a safe crossing over Station Road, onto a combined foot and cycle path to the School. This has also removed the need for a School Crossing Patrol and traffic calming ‘Pinch Point’, at the junction of Greenwood Drive and Station Road.

The level crossings at East Preston and Rustington often close for prolonged periods,

especially during the rush hours. This prolonged closure causes waiting pedestrians to congregate at the gates.

A network of roads was built for the Bramley Green estate. This includes a north/south foot and cycle path which gives cycle access to the new A259 Toucan crossing. A cycle/foot path has been built through the school grounds to link with this path at the south east corner of the school site.

Geographical positioning of staff and students

More than 50% of students live in East Preston and Rustington. For them, the A259 and the railway line are significant obstacles that need to be negotiated on the route to and from school.

The large majority of students live within 2 miles of the school but access routes may extend this distance by up to a further half-mile.

The main reason for the dominant use of motor vehicles for travel by students still appears to be concern for safety. This stems from inadequate provision of paved footpaths to deal with the volume of pedestrians at peak flows and inadequate segregation of pedestrians from the high volumes of vehicular traffic using the roads at rush hours.

In most cases the footpaths abut the carriageway and in the cases where there is a verge separating the footpath from the carriageway it is seldom wider than 0.7 metres (~ 2 feet).

The number of car parking places available within the school grounds has been a problem, but successfully addressed over recent years. Staff travel appears to be a minor contributor to the congestion caused by motor traffic moving onto and off the site in the busiest periods.

Working with Others

The school works closely with local residents and WSCC Highways to address any issues that could affect travel to and from the premises.

Network Rail are invited to address all year-group assemblies. Raising awareness of potential Crossing and general Railway related dangers.

Network Rail contact us if there are any day to day incidents / problems that we should be aware of.

School Trips and Extended School Activities

The transport arrangement will be checked for suitability regards safety and inclusivity. Most trips will travel by public transport, establishment minibus or hired coach and minibus. Staff cars may be used but only after the roadworthiness and insurance is checked. On rare occasions parents may be asked to transport their own children with independent travel arrangements, but the transporting of other students should not occur unless an arrangement has been made between parents and which the school has duly authorised.

Curriculum Links

English

Speaking and listening and writing strand - explaining, describing, informing, and narrating.

Geography

In Year 7, we start the year with understanding Geography including map-reading skills focusing on the local area. We look at how to read maps but also focus on the local area linking to the National Park so students can see the links within this area. In year 8 and 9, we have local fieldtrips to the villages of Angmering and East Preston. In year 8, this is to do with settlement and why people live in different areas. This project is based using our online mapping software and the lead in lesson requires students to complete their route to school on the map looking at the length of the journey. In year 9, we look at rocks in the local area but we also think about safety on the route and explain to students how they should approach walking in the local area.

Maths

In year 7 we check pupils can tell the time using both analogue and digital clocks and then work on reading bus/train timetables. We also introduce the idea of at scale drawings.

In year 8 we extend the idea of scale drawing and bring in bearings. The pupils produce a project based on a fictional island in which they use a scale and bearings to describe journeys. We also look at speed/time/distance calculations and use critical path analysis to find the fastest route through a graph.

In years 9/10/11 these topics may be re-taught or assessed depending on pupil ability.

Action and Review Plan

Using the concerns highlighted through the schools knowledge of the school environment and the community around the school.

| Identified Concern and Date | Action | | |
|-----------------------------|---|--|--|
| Front of School | Working in conjunction with West Sussex Highways. Concerns raised, regarding congestion and poor parking around the School entrance. See Appendix 1 | | |
| Windmill Bridge | In view of the new crossing lights on there. The intention would be to route the Rustington/Littlehampton walkers/bikers, onto the West side of the footpath travelling north and then using the lights rather than crossing the road near/before the Windmill Pub and crossing the bridge on the Eastern side. | | |

Future Highway plans

WSCC plans duelling of A259 at Angmering

WSCC are undergoing major road widening works on the A259. This is the major trunk road that stretches between East Preston, Rustington and the school site. The plans are available to view on the WSCC Highways and Planning website. (Link below).

This works will cause considerable disruption to the flow of traffic to and from the school and also disruption to the pedestrian traffic. The plans show that all the areas to cross the road are being retained and the footbridge that acts as the main route to school from that area is also being retained.

The school is in close communication with WSCC and the Parish council of any further disruption due to the works and the amended completion date is December 2022.

A small overview of the works is available in Appendix 2.

<https://www.westsussex.gov.uk/roads-and-travel/roadworks-and-projects/road-projects/a259-littlehampton-improvements/>

Monitoring

The Estates Manager will Monitor the Travel Plan. Updating, as changes happen along with an annual Review. With feedback to the Full Governing Body with ratification as required. Annual reviews supported by termly updates which are fed back to WSCC via the Safer Routes to School Team at srts.team@westsussex.gov.uk

Development during the period 2004 to 2021

Since the first Travel Plan was prepared and implemented, significant targeted actions have been taken.

- New East entrance from Bramley Green via Rowan Way.
- Dedicated cycle path inside the school grounds from the junction of Station Road and Greenwood Drive
- Improved road markings in school, better designated parking spaces, staff parking permits and monitoring of car parking to improve separation of cyclists, cars and pedestrians at the front of school
- Increased and re-organised car parking now provides 171 spaces. Parking for 10 motor cycles, 9 disabled vehicles and 4 mini buses.
- Improved designated drop off points for buses and taxis for LNC students
- Increased cycle parking for students and staff. Further cycle parking was installed in October 2011
- Fence around the school site removing the ability to exit straight onto the A259 at the Angmering Station roundabout. This directs students to use the footbridge.
- Toucan crossing over the A259 at Sainsbury's.
- New cycle-path / footpath on the north side of the A259 from the Toucan crossing along to and up Station Road.
- Toucan crossing across the A259 mid way between the two roundabouts
- Cycle and footpath from south east gate to new cycle parking near Science block with associated cycle parking
- School bus service for Ferring has morning drop off and afternoon pick up in Rowan Way, Bramley Green. These have been facilitated by regular meetings with Parish, County councillors and WSCC officers
- Improvements around the Roundstone railway crossing was completed allowing the application and eventual closure of Pagett's Crossing.
- Angmering Village Traffic Management Scheme. This provides a raised table at the Greenwood Drive/Station Road junction within a 30mph zone. An extension to the 20mph zones along with raised tables will cover roads to the North and East of the School. This work was completed during the 2017/18 school year.
- Current duelling of the A259.

Appendix 1

Ref -School Keep Clear 2017 Programme - East and West Arun Schools.

Dear parents

As part of our work with West Sussex County Council to support safe and sustainable travel to our school, you will have noticed some changes to the road markings outside local schools. Our School Keep Clear markings are now enforceable and we need your support in keeping this area car free. The school gate area is frequently highlighted as an area of concern for both pupils and parents so please support the whole school community by ensuring if you drive to school to park in a safe and considerate way away from the school gate.

Can I take this opportunity to remind you that these improvements are design to protect the safety of our families and serve to reinforce valuable road safety message that our children can learn. The school cannot do anything for parents who receive a ticket if parking illegally. I hope I can rely on your compliance and that you will respect these areas as 'car free' to help improve visibility and safety for pedestrians and cyclists.

If parents have a concern about safe travel to school or this improvement, please do contact the school office or our WSCC travel advisor Pene Mather at pene.mather@westsussex.gov.uk

Kind regards

School Headteacher



Full reports available on request.

Appendix 2

Duelling of A259 at Angmering

A lot of new housing and commercial development is under construction north of Littlehampton.

The Arun Local Plan recognises that expected development will only increase the current traffic issues. If these traffic problems on the A259 are not addressed, the positive impacts of increased access to new homes and jobs may not be achieved.

We have developed proposals to reduce congestion and improve journey times and reliability.

The first phase of works includes a new dual carriageway to replace the existing single carriageway between the new Fitzalan link road and the Body Shop roundabout and the single carriageway between Station Road, Angmering and the A280 roundabout. Later phases see improvements to the Tesco Bridge Road roundabout and Goring Crossways junction.

The dual carriageway works have an approved budget of £25.8m. This budget is jointly funded by the Coast to Capital Local Enterprise Partnership, West Sussex County Council and by private developer contributions.

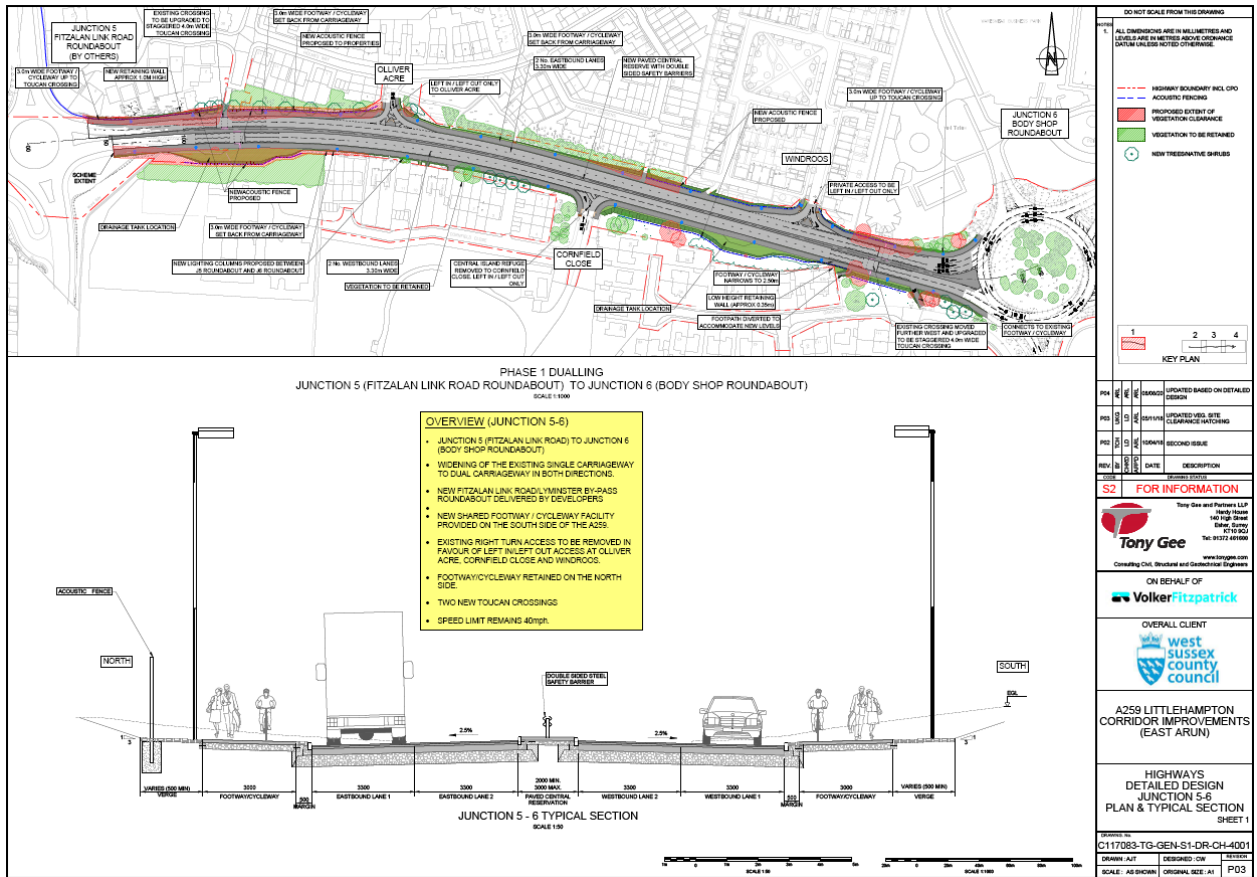
The overall benefit of these proposals will be to reduce current and future traffic congestion by increasing road capacity. The improvements will reduce queuing, resulting in quicker and more predictable journeys.

As well as benefits for motorised traffic, there will be approximately 2km of a new pedestrian and cycle route on the south side of the improved road. Much of this will be segregated from the road by a grass verge. It is intended that this will improve access to local facilities for walkers and cyclists.

Additionally, people will be encouraged to use the new footpath and cycle way to make local trips without using their car.

Strategically, the dual carriageway will support the provision of at least 800 new homes and 8.95 hectares of new employment space.

A public consultation exercise was undertaken in spring 2016, with 78 per cent of respondents saying they agree with the proposals to improve the A259 in general, whereas 22 per cent said that they generally do not support the proposed scheme. Support for the scheme was shown to be widespread throughout the local area.



DO NOT SCALE FROM THIS DRAWING

1. ALL DIMENSIONS ARE IN MILLIMETRES AND LEVELS ARE IN METRES ABOVE ORDNANCE DATUM UNLESS NOTED OTHERWISE

LEGEND:
 - - - HIGHWAY BOUNDARY REL. C/D
 - - - ACQUATIC FENCING
 - - - IMPROVED EXTENT OF VEGETATION CLEARANCE
 - - - VEGETATION TO BE RETAINED
 - - - NEW TREES/NATIVE SHRUBS

KEY PLAN

| | | | |
|-----|----|------|------------------------|
| REV | NO | DATE | DESCRIPTION |
| 1 | 1 | | ISSUED FOR INFORMATION |
| 2 | 2 | | ISSUED FOR INFORMATION |
| 3 | 3 | | ISSUED FOR INFORMATION |
| 4 | 4 | | ISSUED FOR INFORMATION |

S2 FOR INFORMATION

Tony Gee
 Tony Gee and Partners LLP
 160 High Street
 Brighton, BN1 1AB
 Tel: 01273 455900

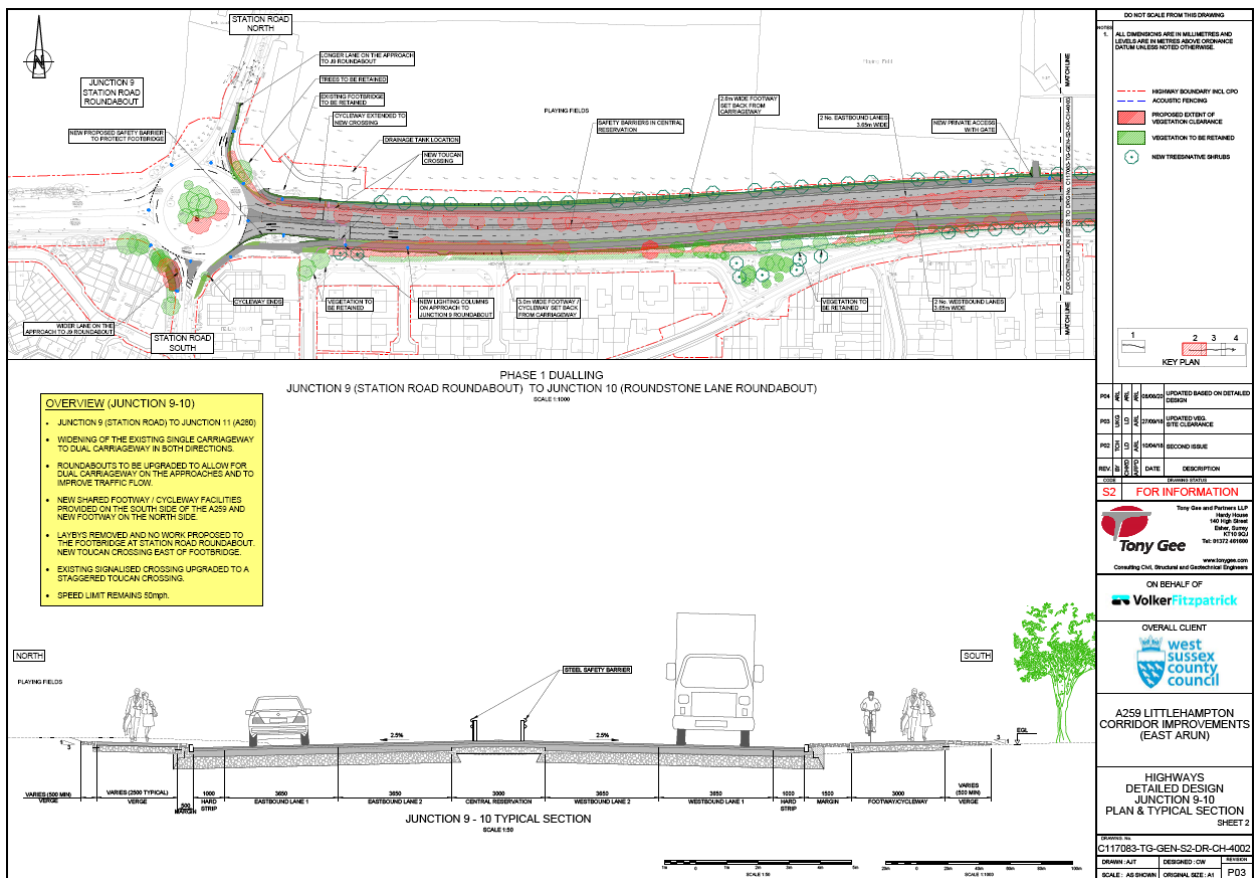
ON BEHALF OF
VolkerFitzpatrick

OVERALL CLIENT
West Sussex county council

A259 LITTLEHAMPTON CORRIDOR IMPROVEMENTS (EAST ARUN)

HIGHWAYS DETAILED DESIGN
 JUNCTION 5-6
 PLAN & TYPICAL SECTION
 SHEET 1

C117083-TG-GEN-S1-DR-CH-4001
 DRAWN: APT DESIGNED: CW SCALE: AS SHOWN ORIGINAL SIZE: A1 PD3



DO NOT SCALE FROM THIS DRAWING

1. ALL DIMENSIONS ARE IN MILLIMETRES AND LEVELS ARE IN METRES ABOVE ORDNANCE DATUM UNLESS NOTED OTHERWISE

LEGEND:
 - - - HIGHWAY BOUNDARY REL. C/D
 - - - ACQUATIC FENCING
 - - - IMPROVED EXTENT OF VEGETATION CLEARANCE
 - - - VEGETATION TO BE RETAINED
 - - - NEW TREES/NATIVE SHRUBS

KEY PLAN

| | | | |
|-----|----|------|------------------------|
| REV | NO | DATE | DESCRIPTION |
| 1 | 1 | | ISSUED FOR INFORMATION |
| 2 | 2 | | ISSUED FOR INFORMATION |
| 3 | 3 | | ISSUED FOR INFORMATION |
| 4 | 4 | | ISSUED FOR INFORMATION |

S2 FOR INFORMATION

Tony Gee
 Tony Gee and Partners LLP
 160 High Street
 Brighton, BN1 1AB
 Tel: 01273 455900

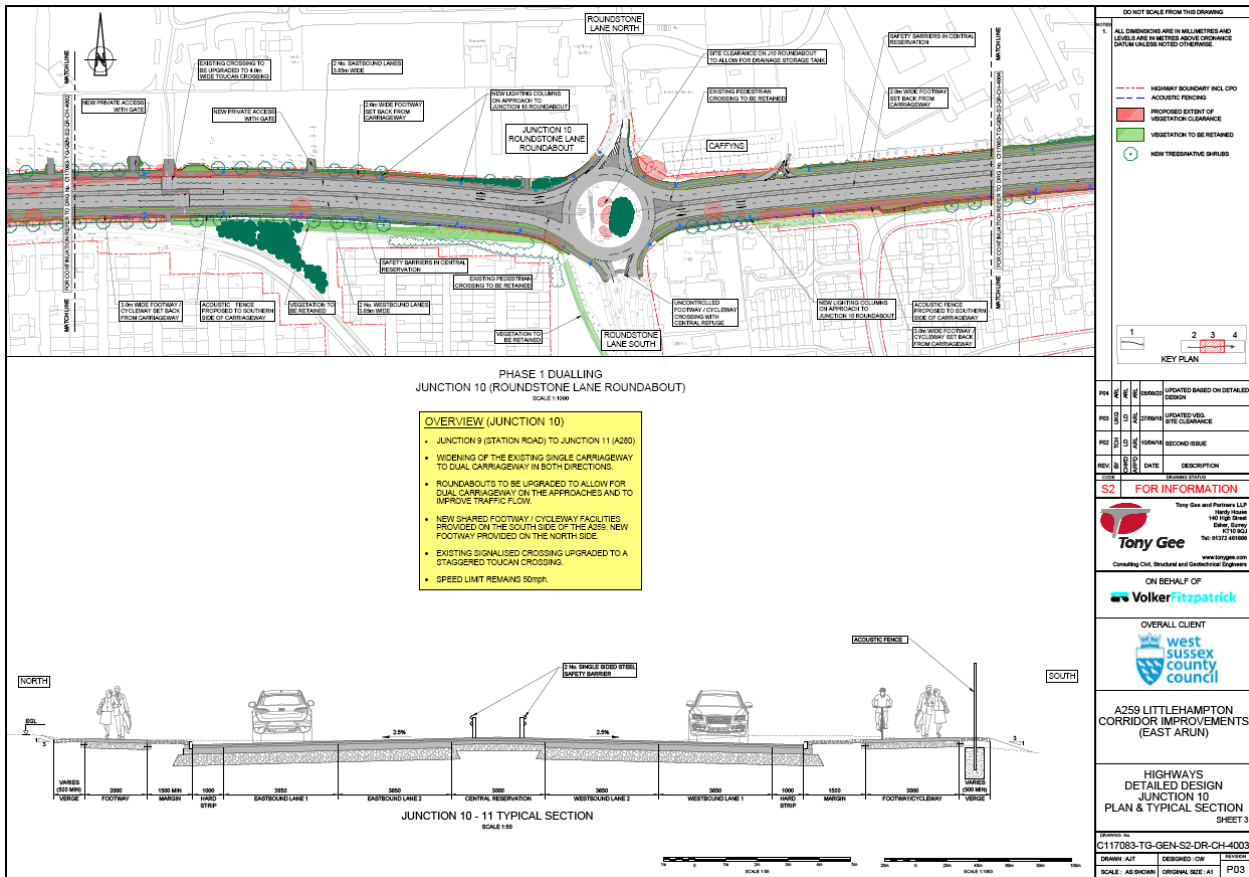
ON BEHALF OF
VolkerFitzpatrick

OVERALL CLIENT
West Sussex county council

A259 LITTLEHAMPTON CORRIDOR IMPROVEMENTS (EAST ARUN)

HIGHWAYS DETAILED DESIGN
 JUNCTION 9-10
 PLAN & TYPICAL SECTION
 SHEET 2

C117083-TG-GEN-S2-DR-CH-4002
 DRAWN: APT DESIGNED: CW SCALE: AS SHOWN ORIGINAL SIZE: A1 PD3



DO NOT SCALE FROM THIS DRAWING

1. ALL DIMENSIONS ARE IN MILLIMETRES AND LEGIBLE ARE METRES ABOVE OR BELOW DIMENSION LINE UNLESS NOTED OTHERWISE.

LEGEND:
 - - - HIGHWAY BOUNDARY INCL. C/O
 - - - ACOUSTIC FENCING
 - - - PROPOSED EXTENT OF VEGETATION CLEARANCE
 - - - VEGETATION TO BE RETAINED
 - - - NEW TREES/PLANTING SCHEDULE

KEY PLAN

| NO. | DATE | DESCRIPTION |
|-------|------------|------------------------|
| REV 1 | 10/08/2021 | ISSUED FOR INFORMATION |
| REV 2 | 10/08/2021 | ISSUED FOR INFORMATION |
| REV 3 | 10/08/2021 | ISSUED FOR INFORMATION |
| REV 4 | 10/08/2021 | ISSUED FOR INFORMATION |

S2 FOR INFORMATION

Tony Gee
 Tony Gee and Partners LLP
 100 High Street
 Brighton
 BN1 1BB
 Tel: 01273 456600
 www.tonygee.com

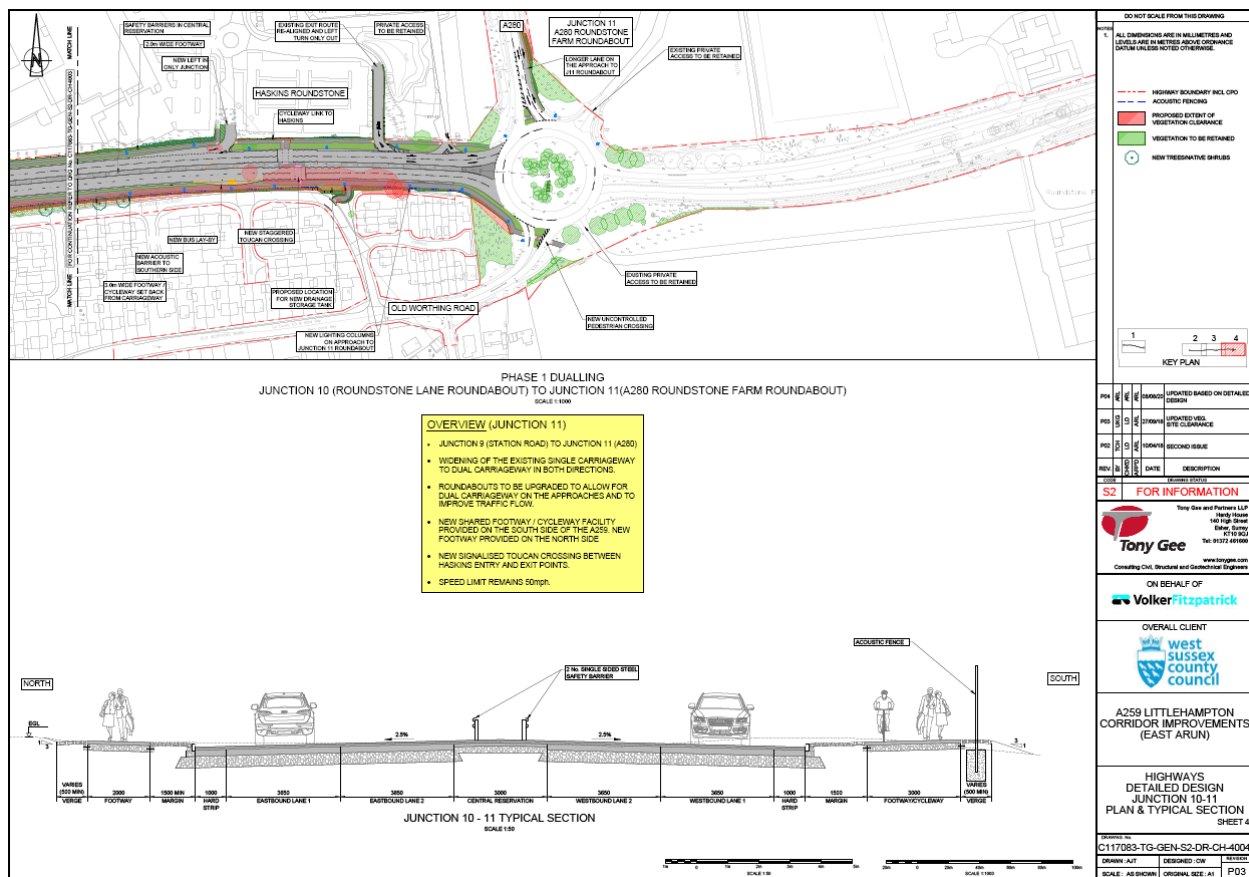
ON BEHALF OF
VolkerFitzpatrick

OVERALL CLIENT
West Sussex County Council

A259 LITTLEHAMPTON CORRIDOR IMPROVEMENTS (EAST ARUN)

HIGHWAYS DETAILED DESIGN
 JUNCTION 10
 PLAN & TYPICAL SECTION
 SHEET 3

C117083-TG-GEN-S2-DR-CH-4003
 DRAWN: APT DESIGNED: CW
 SCALE: AS SHOWN ORIGINAL SIZE: A1 P03



DO NOT SCALE FROM THIS DRAWING

1. ALL DIMENSIONS ARE IN MILLIMETRES AND LEGIBLE ARE METRES ABOVE OR BELOW DIMENSION LINE UNLESS NOTED OTHERWISE.

LEGEND:
 - - - HIGHWAY BOUNDARY INCL. C/O
 - - - ACOUSTIC FENCING
 - - - PROPOSED EXTENT OF VEGETATION CLEARANCE
 - - - VEGETATION TO BE RETAINED
 - - - NEW TREES/PLANTING SCHEDULE

KEY PLAN

| NO. | DATE | DESCRIPTION |
|-------|------------|------------------------|
| REV 1 | 10/08/2021 | ISSUED FOR INFORMATION |
| REV 2 | 10/08/2021 | ISSUED FOR INFORMATION |
| REV 3 | 10/08/2021 | ISSUED FOR INFORMATION |
| REV 4 | 10/08/2021 | ISSUED FOR INFORMATION |

S2 FOR INFORMATION

Tony Gee
 Tony Gee and Partners LLP
 100 High Street
 Brighton
 BN1 1BB
 Tel: 01273 456600
 www.tonygee.com

ON BEHALF OF
VolkerFitzpatrick

OVERALL CLIENT
West Sussex County Council

A259 LITTLEHAMPTON CORRIDOR IMPROVEMENTS (EAST ARUN)

HIGHWAYS DETAILED DESIGN
 JUNCTION 10-11
 PLAN & TYPICAL SECTION
 SHEET 4

C117083-TG-GEN-S2-DR-CH-4004
 DRAWN: APT DESIGNED: CW
 SCALE: AS SHOWN ORIGINAL SIZE: A1 P03

Authorised on behalf of the school September 2021

| | |
|--------------------|-----------------------------|
| Headteacher | Simon Liley |
| Chair of Governors | Matthew Fielder |
| Travel Plan Lead | Tim Laker (Estates Manager) |